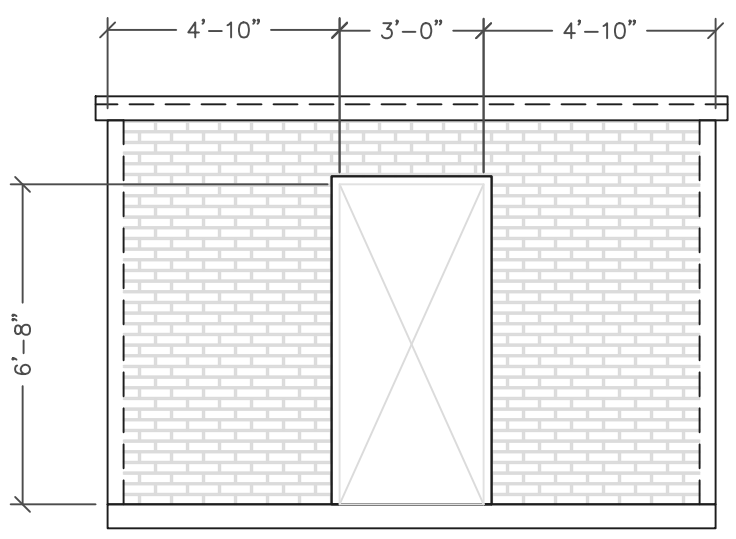
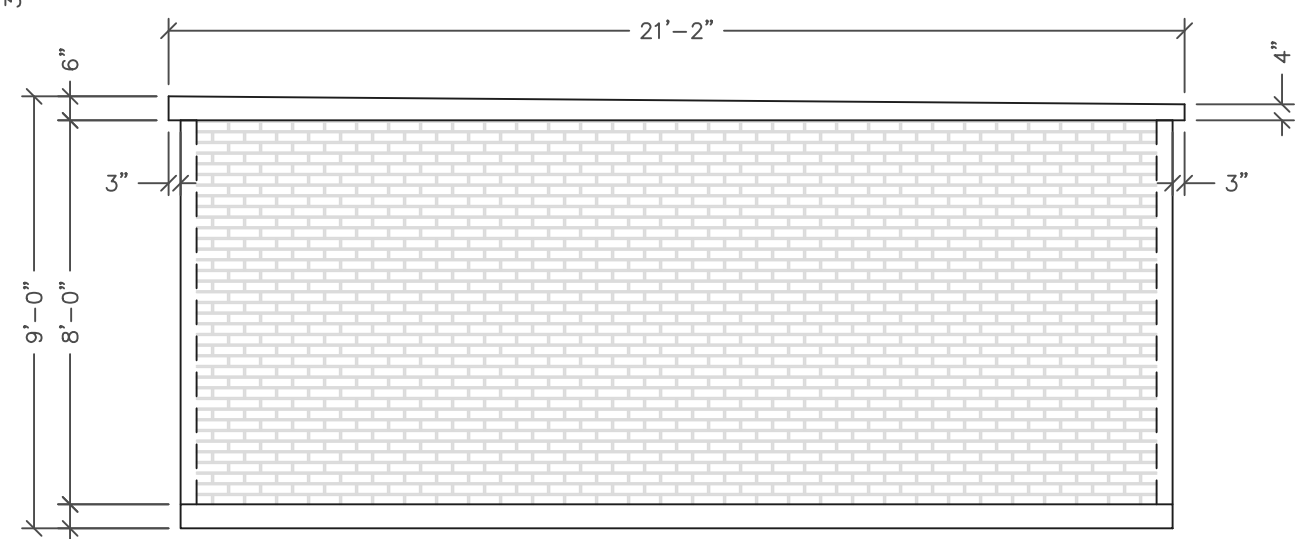


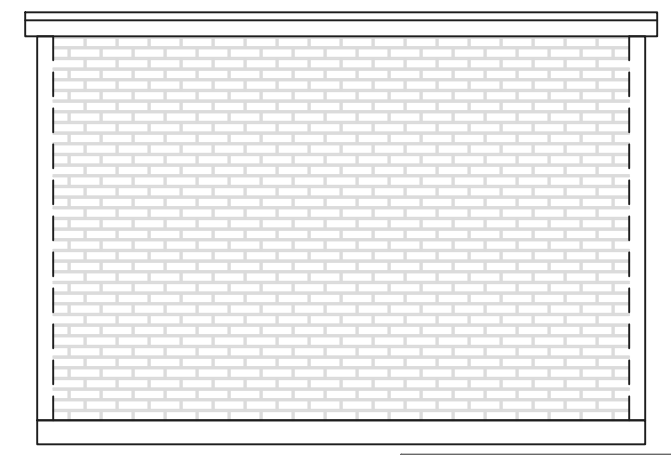
TOP VIEW



FRONT VIEW
1/4" = 1'-0"



SIDE VIEW



BACK VIEW

- DESIGN CRITERIA:
- SEISMIC CATEGORY C
 - WIND LOAD - 110 MPH
 - FLOOR LIVE LOAD - 250 PSF

 - CONCRETE 5000 PSI
 - REBAR ASTM A615 GRADE 60

- DOOR OPTIONS:
- 3'-0" x 6'-8" SINGLE EXTERIOR DOOR
 - 6'-0" x 6'-8" DOUBLE EXTERIOR DOOR
 - 6'-0" x 7'-0" STEEL ROLLUP DOOR
 - CUSTOM DOOR SIZES AVAILABLE

EXTERIOR FINISH: PER CUSTOMER SPECIFICATION
 EXTERIOR COLOR: PER CUSTOMER SPECIFICATION



www.trucast.com

ZEELAND, MI

12' x 20'
 UTILITY/STORAGE
 BUILDING