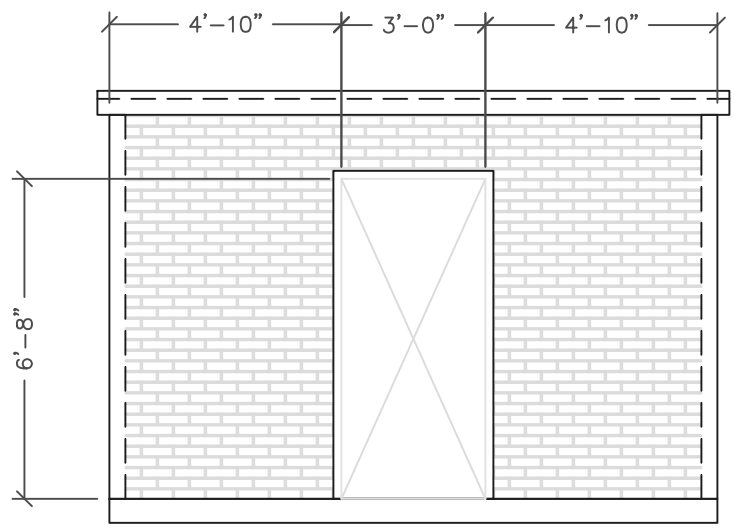
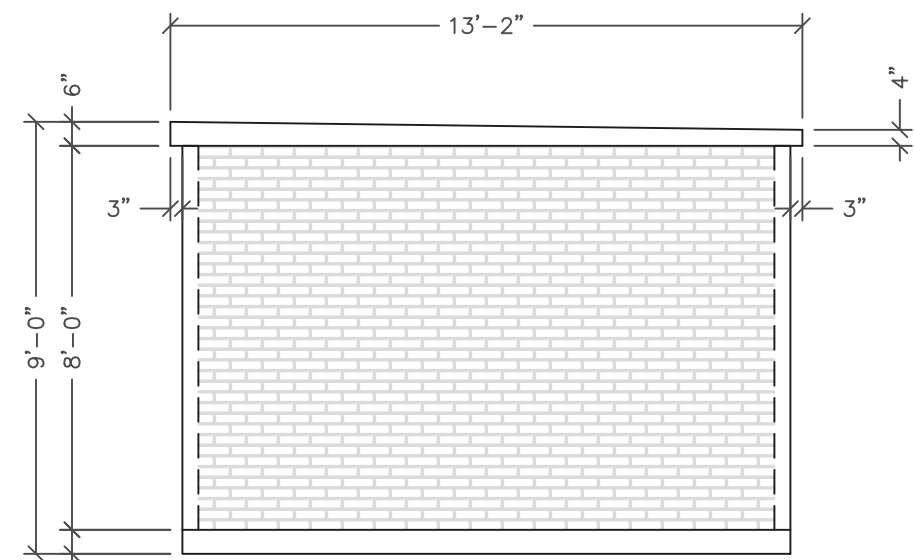


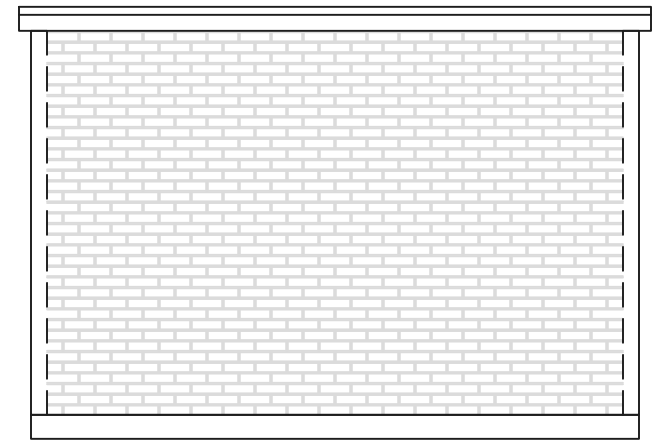
TOP VIEW



FRONT VIEW  
1/4" = 1'-0"



SIDE VIEW



BACK VIEW

- DESIGN CRITERIA:
- SEISMIC CATEGORY C
  - WIND LOAD - 110 MPH
  - FLOOR LIVE LOAD - 250 PSF
  
  - CONCRETE 5000 PSI
  - REBAR ASTM A615 GRADE 60

- DOOR OPTIONS:
- 3'-0" x 6'-8" SINGLE EXTERIOR DOOR
  - 6'-0" x 6'-8" DOUBLE EXTERIOR DOOR
  - 6'-0" x 7'-0" STEEL ROLLUP DOOR
  - CUSTOM DOOR SIZES AVAILABLE

EXTERIOR FINISH: PER CUSTOMER SPECIFICATION  
EXTERIOR COLOR: PER CUSTOMER SPECIFICATION



[www.trucast.com](http://www.trucast.com)

ZEELAND, MI

**12' x 12'**  
**UTILITY/STORAGE**  
**BUILDING**